



u8|GO™ TERMINAL

MAKING MOBILE GLOBAL

The new Kymeta™ u8 terminal provides a complete connectivity solution for communications-on-the-move (COTM) and networks-on-the-move (NOTM) when and where you need it most.

The u8 terminal, with Kymeta revolutionary software-defined, electronic beam-steering technology, is low profile and easy-to-mount on vehicles and vessels. Kymeta u8 terminals and u8 GO portable terminals for the government and military integrate the iDirect 950mp router and support external modems such as ViaSat CBM400 and most commercial modems.

Broadband by-the-gigabyte connectivity packages are available from Kymeta in either MIR or MIR/CIR plans. Kymeta Connect™ packages provide all-inclusive bundles with monthly rate.



TURNKEY SOLUTIONS

MULTIPLE TERMINAL CONFIGURATIONS PROVIDE THE HARDWARE, SOFTWARE, AND CONNECTIVITY YOU NEED.



DESIGNED FOR MOBILE PLATFORMS

LOW PROFILE, AERODYNAMIC DESIGN, NATIVE DC POWER INPUT, AND NEW ACCESSORIES SIMPLIFY VEHICLE INTEGRATION.



EXTENDED ENVIRONMENTAL COVERAGE

WITH AN ALL-OUTDOORS CONSTRUCTION AND IP66 RATING, THE U8 TERMINAL FOR GOVERNMENT AND MILITARY IS DESIGNED FOR THE MOST DEMANDING ENVIRONMENTS.



PORTABLE AND RUGGED

WITH A HARDENED REUSABLE SHIPPING CASE, THE KYMETA U8 GO PORTABLE TERMINAL FOR GOVERNMENT AND MILITARY PROVIDES THE FASTEST OUT-OF-THE-BOX COMMUNICATION ANYWHERE—JUST ADD POWER.



LEO-UPGRADEABLE

THE U8 ANTENNA ANTICIPATES THE ARRIVAL OF KU-BAND LEO CONSTELLATIONS. YOUR TERMINAL CAN BE UPGRADED TO A LEO CONFIGURATION AT A LATER TIME.



u8 GEO Terminal for Government and Military Specifications*

CONNECTIVITY

SETUP TIME OF TERMINAL

Unpackage, lift, mount, and operate in less than 20 minutes

ACQUISITION OF SIGNAL

Less than 1 minute from initiation of acquisition

SATCOM MODEM

Integrated iDirect 950mp satellite router

MECHANICAL

DIMENSIONS

L 89.5 cm × W 89.5 cm × H 14 cm
L 35.2 in. × W 35.2 in. × H 5.5 in.

WEIGHT

34 kg (75 lb.)

OPERATIONAL TEMPERATURE

-40 °C to +55 °C (ambient)
-40 °C to +70 °C (with solar load)

STORAGE TEMPERATURE

-40 °C to +85 °C

INGRESS PROTECTION

IP66

POWER

DC INPUT POWER

12 VDC to 36 VDC max

POWER CONSUMPTION

(WITH INTEGRATED MODEM)
150 W (typical), 510 W (peak)**

INTERFACES

NETWORK INTERFACE

Ethernet

ANTENNA

BAND

Ku

ANTENNA TYPE

Electronically scanned array

POLARIZATION

Linear, software-defined

RX FREQUENCY RANGE

10.7 GHz to 12.75 GHz

G/T BROADSIDE

9 dB/K to 11.5 dB/K

RX INSTANTANEOUS

BANDWIDTH

250 MHz

TX FREQUENCY RANGE

13.75 GHz to 14.5 GHz

EIRP BROADSIDE

45.5 dBW to 46.5 dBW
(14.0 GHz to 14.5 GHz)

TRACKING

SCAN ANGLES

Az 360°, El +15° to +90°

TRACKING RECEIVER TYPE

Integrated tracking system
DVB-S2, DVB-S2X

COMPLIANCE

CERTIFICATIONS

CE, FCC, Nemko, WEEE, RoHS

AVAILABLE CONFIGURATIONS

GOVERNMENT AND MILITARY u8 TERMINAL

- u8 antenna with integrated ACU and power supply
- iDirect 950mp satellite modem
- RF chain with low-profile BUC
- Shroud

GOVERNMENT AND MILITARY u8 GO PORTABLE TERMINAL

- u8 antenna with integrated ACU and power supply
- iDirect 950mp satellite modem
- RF chain with low-profile BUC
- Shroud
- Shipping case

AVAILABLE ACCESSORIES

- Vehicle mount kit
- Vehicle power kit
- AC-to-DC power kit
- Adapter plate for existing u7 mounts
- Cables

AVAILABLE SOFTWARE-ENABLED FEATURES

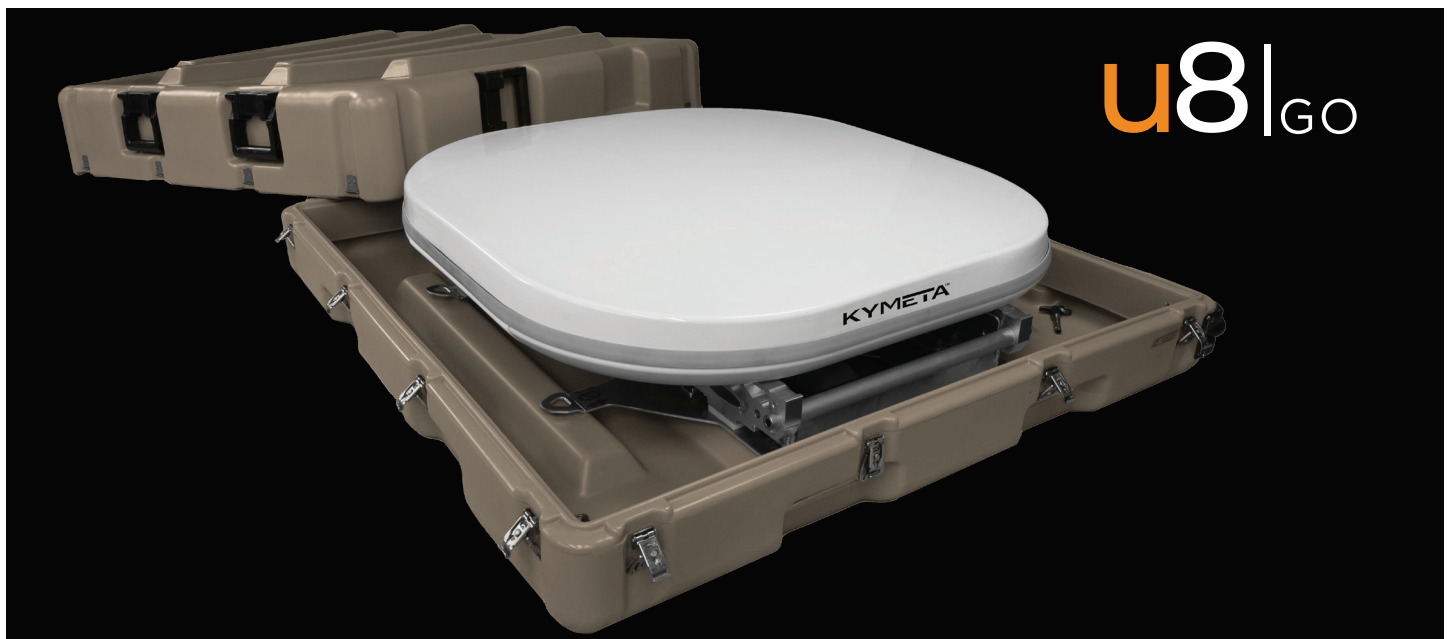
- Manual positioning (GPS denied) mode
- Full privacy mode
- External GPS support

KYMETA | CONNECT™

Kymeta Connect™ offers full-service connectivity solutions for u8 terminals. By-the-gigabyte packages are available with either satellite-only or hybrid satellite/cellular capacity. Refer to the Kymeta Connect product sheet for more detail.

*Specifications as of 10 November, 2020. Subject to change.

**Software restriction on peak draw available. May affect antenna performance at low temperature.



For more information, contact Kymeta at sales@kymetacorp.com.

12277 134th Ct. NE, Redmond, WA 98052 | Phone: 425.896.3700 | www.kymetacorp.com

© 2021 Kymeta Corporation. KYMETA and KYMETA CONNECT are trademarks of Kymeta Corporation, with registrations or pending applications for these marks in the U.S. and other countries. All other trademarks are the property of their respective owners.

KYMETA™

700-00112-000 revH